

Cadenza:

explore sonorities of this tuning (staying within the harmonic vocabulary). Continue arpeggios or create new, fast gestures with decaying "echo" effects (as if played with a delay ped.) Gradually increase in volume and activity, eventually leading back to cadence in the following bar. Duration approx. 1-2 min.

33



Broadly (♩ = 96)

34



f espr.

mf espr. >

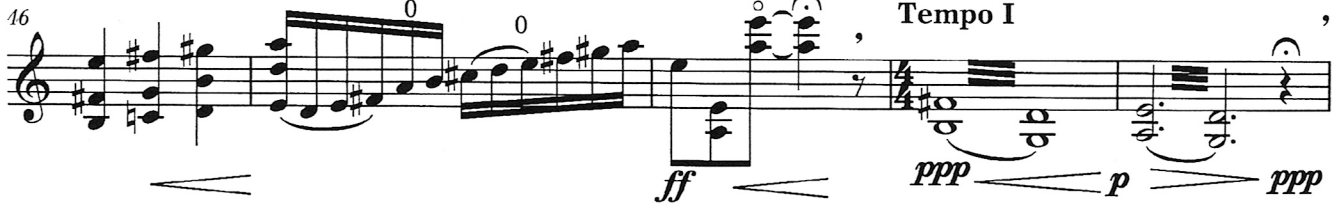
(sul D/G)

40



f

46



Tempo I

ff

ppp

p

ppp

51



p

ppp

pp

ppp

p

n